



HP TUNER INSTALLATION MANUAL

2017 GM VEHICLES
5.3, 6.0, 6.2 ENGINES

INTRODUCTION

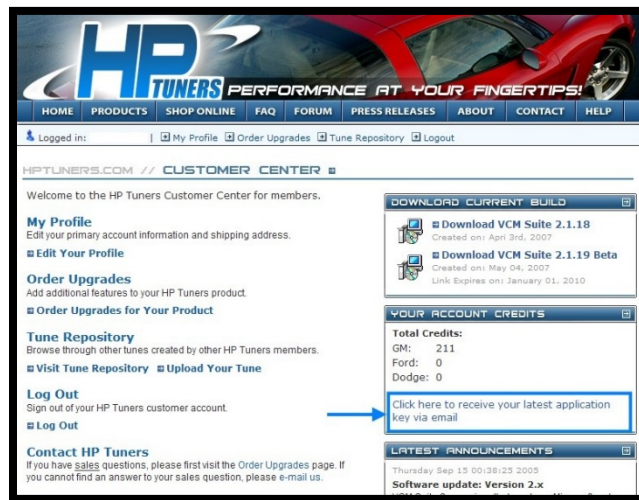
Before beginning installation, we encourage you to read this manual thoroughly before you begin any portion of the installation:

1. Making any changes to the calibration is strictly prohibited. Any change will void all warranties and will make the vehicle non-emissions legal.
2. **Whipple calibrations are for stock engines, changes such as long tubes, cold air intakes, cams and big throttle bodies are not supported. Changes such as these will require custom tuning.**
3. Having the latest OEM PCM and TCM calibration is highly recommended to eliminate potential OEM issues in calibration.
4. IT IS THE RESPONSIBILITY OF THE INSTALLER AND/OR USER OF THIS PRODUCT TO ENSURE THAT IT IS USED IN COMPLIANCE WITH ALL APPLICABLE LAWS AND REGULATIONS.

If you're a new customer & just received your HP Tuner MPVI hardware/software package in the mail, create your unique customer page at www.hptuners.com to get your **application key**. If you are an existing customer and just need your application key resent, login to your customer page and send the application key via email to yourself right on your customer login page. If you run into any issues creating your account please do not hesitate to email support@hptuners.com for resolution.

When you go to create an account, it will ask you to provide your serial interface number which is located **ON** the back of your MPVI interface.

The application key delivery is automated meaning once you click that link as shown below it is automatically sent to the email you have listed in your profile. If it does not show up to that email within 5 minutes more than likely your spam filter ate the email. In this case please first check your junk mail box and if its not in there you can add updates@hptuners.com to your address book as this will make it less likely your spam filter will eat it, so once you've added it you can try sending it again. If it still gets eaten by your spam filter, we would strongly suggest using a different email address. Some people have reported **hotmail, .me & .mac** email extensions not to work well so try to avoid them if possible.

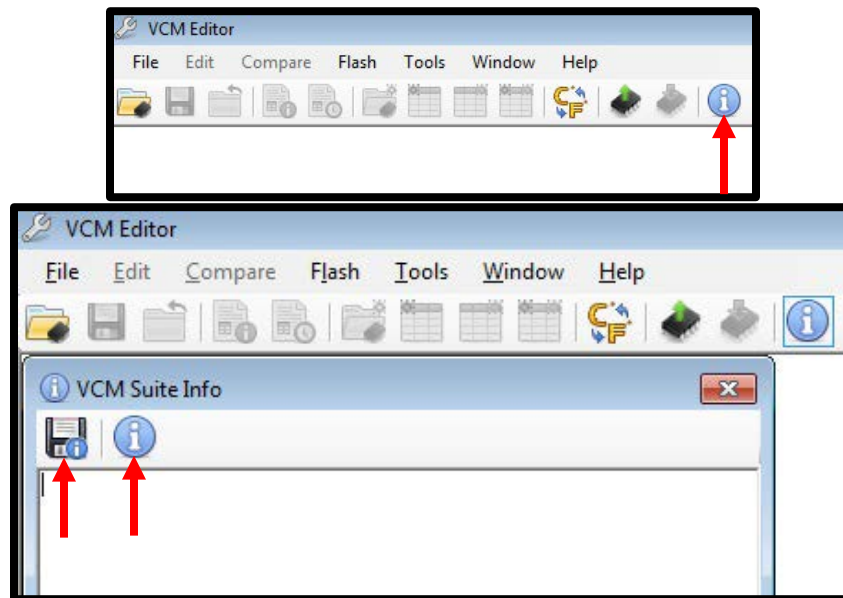


The following process is necessary for tuning 2017 GM vehicles at this time

1. Download and install the latest VCM Suite 3.4+ update available on your customer page.
2. Connect to vehicle, turn key to engine run (do not start engine), push button type ignitions, hold push button down for 10 seconds to activate diagnostic mode. Open VCM Editor.



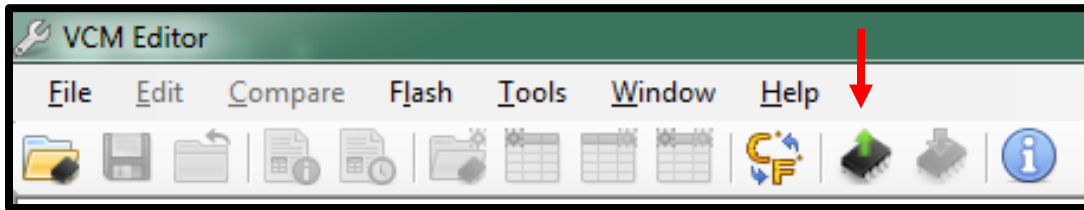
3. Gather a VCM Suite Infolog (**using VCM Suite 3.4+**) by first clicking the info icon. This will bring up the VCM Suite info window, click the new info icon and the window will populate with the required data. Click the disk icon to save as. It is a good idea to save the file with the VIN and or you or customers name. The best place to save the document is My Documents or Desktop so it is easy to find. Email this info log to support@hptuners.com.



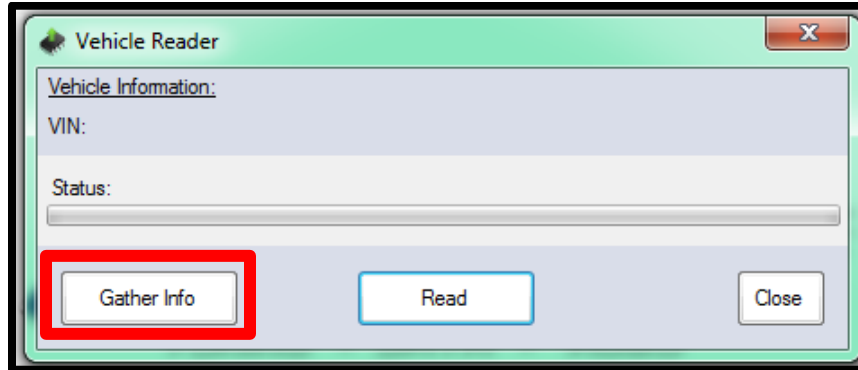
4. You will be notified by HP Tuners support when your vehicle is supported and can be tuned, usually the same business day. Once you have notification, update your version of software by going to your customer page at HP Tuners and installing the latest VCM Suite build. The latest update is required to upload/download.
5. Make sure you are connected to the internet for the first time you are tuning a 2017 GM vehicle. This is required only for the first time you are tuning a specific vehicle using a specific PC.
6. Once you get your notification that the calibration is supported, connect to vehicle, turn key to engine run (do not start engine), push button type ignitions, hold push button down for 10 seconds to activate diagnostic mode. Open VCM Editor.



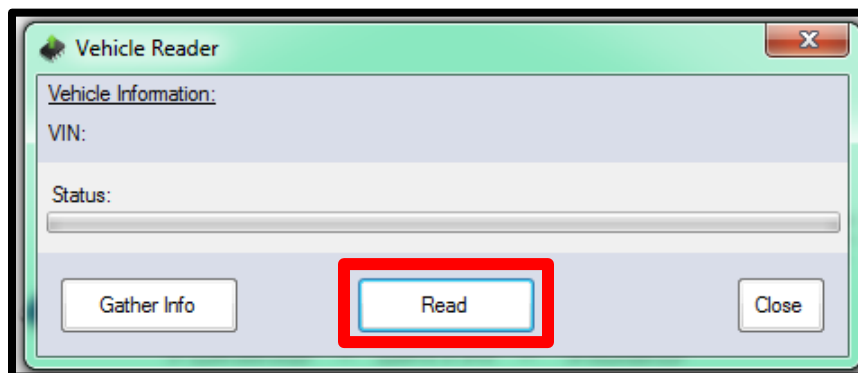
7. With the vehicle on, engine not running, click the green arrow icon to READ the file in the PCM.



8. Click the "Gather Info" icon to populate the PCM data.

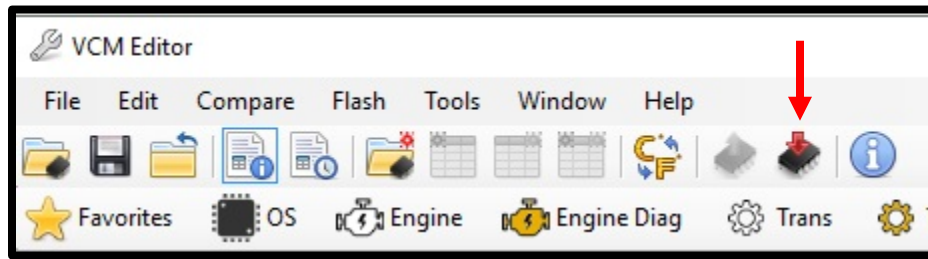


9. Once the info is self-gathered by HP Tuners, click the "Read" icon. Once the file is uploaded, save this file in an easy to find location (example: mydocuments/HP Tuners/cals and logs). Create a file name with VIN number, Customer name and engine size. Example: **2C3CDXCT1FH737913_John Smith_6.2L_Stock**. If you want to keep the file name shorter, use only the last 4 digits of the VIN but keep the same information. We will supply a similar name but with SC in the file to help distinguish between them. NOTE: Always keep the stock file. If you are a dealer/installer, email the file to the customer or install on the HP Tuner thumb drive supplied. Whipple does not store stock files.



10. Email this file to tuning@whipplesuperchargers.com. This may take 24-48 hours for your calibration.

11. Once calibration is supplied, save to your PC in the same location as the stock file. Open VCM Editor. Open the calibration by clicking file, connect to vehicle, turn key to engine run (do not start engine), push button type ignitions, hold push button down for 10 seconds to activate diagnostic mode. Click the red arrow icon (WRITE VEHICLE) to write the new calibration to the vehicle.



12. Once the vehicle is flashed, turn key off for 10 seconds. The vehicle is now ready to start and operate.
13. HP Tuners supplies a free data logging program, VCM Scanner. If required, you may use this for diagnostic purposes. Whipple has pre-made channel list for proper data logging. If logging, please request a data log channel list.
14. **NEVER MAKE CHANGES TO THE CALIBRATION.** The calibration is designed and tested by Whipple Superchargers. Any change will void any and all warranties, along with emissions compatibility.