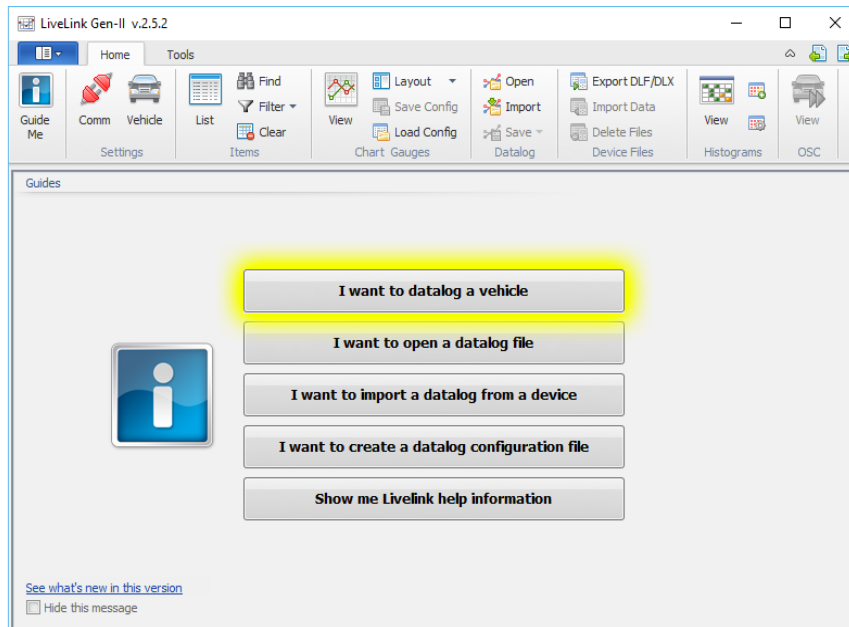


HOW TO DATALOG WITH SCT X4

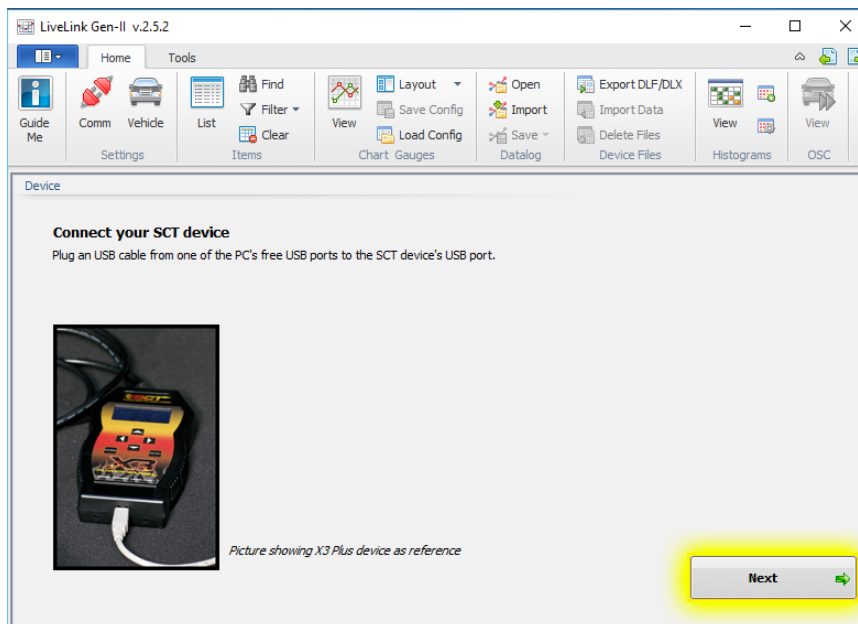
We recommend downloading SCT's newest datalogging software, LiveLink GenII from the SCT website here:

SCT Livelink Software

- 1) Install Livelink GenII on your computer
- 2) Run Livelink GenII and select "I want to datalog a vehicle"

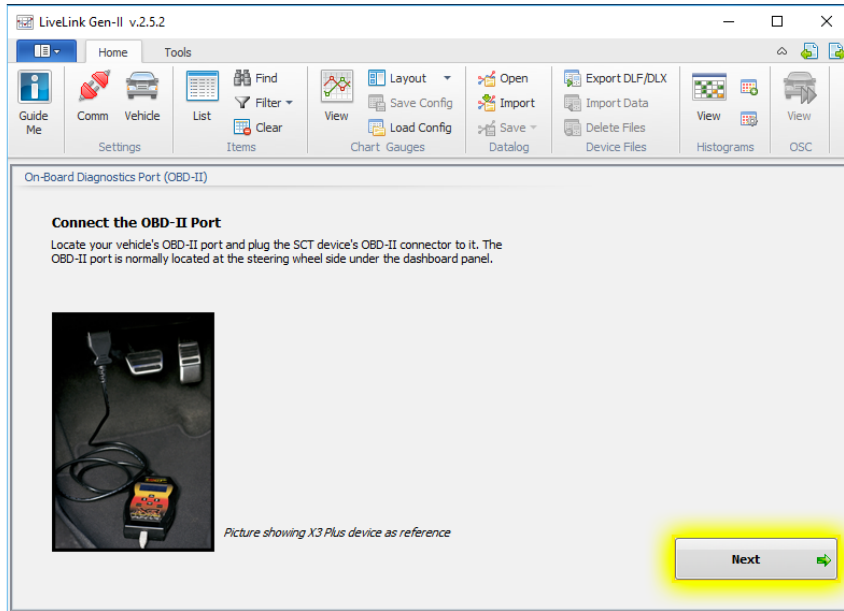


- 3) Connect your SCT device to your computer with the USB cable

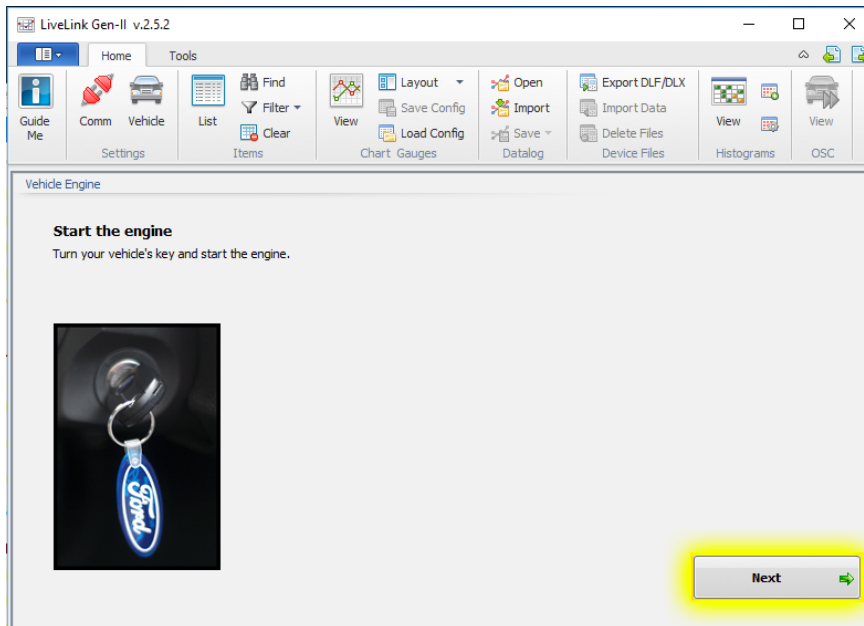


HOW TO DATALOG WITH SCT X4

4) Connect your SCT device to the Vehicles OBD-II (Diagnostic) Port

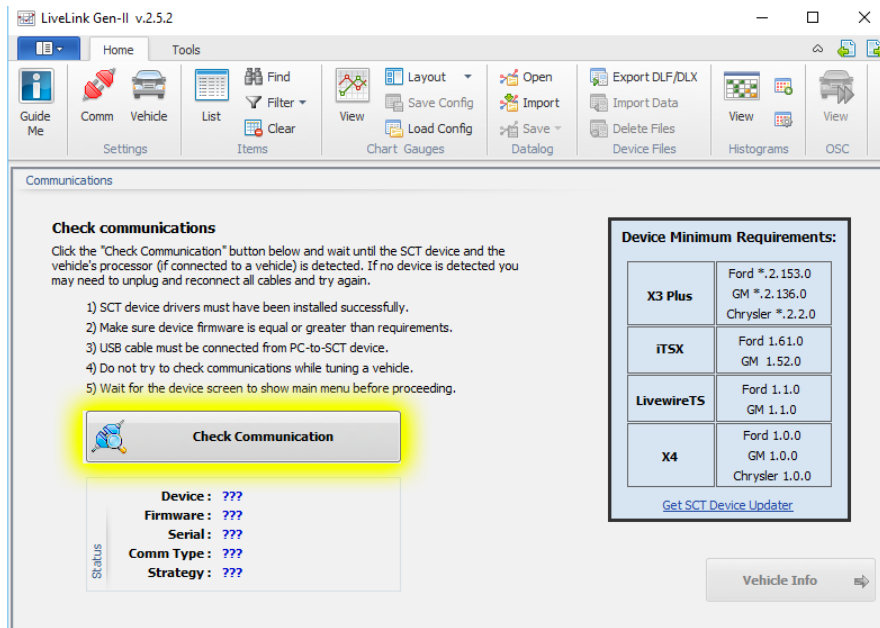


5) Start the Vehicle

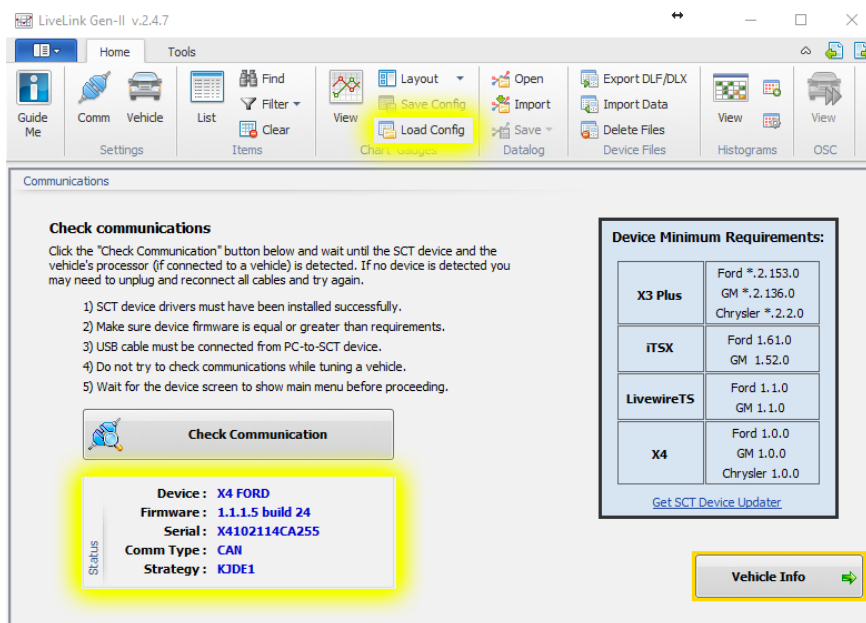


HOW TO DATALOG WITH SCT X4

6) Click on "Check Communication"

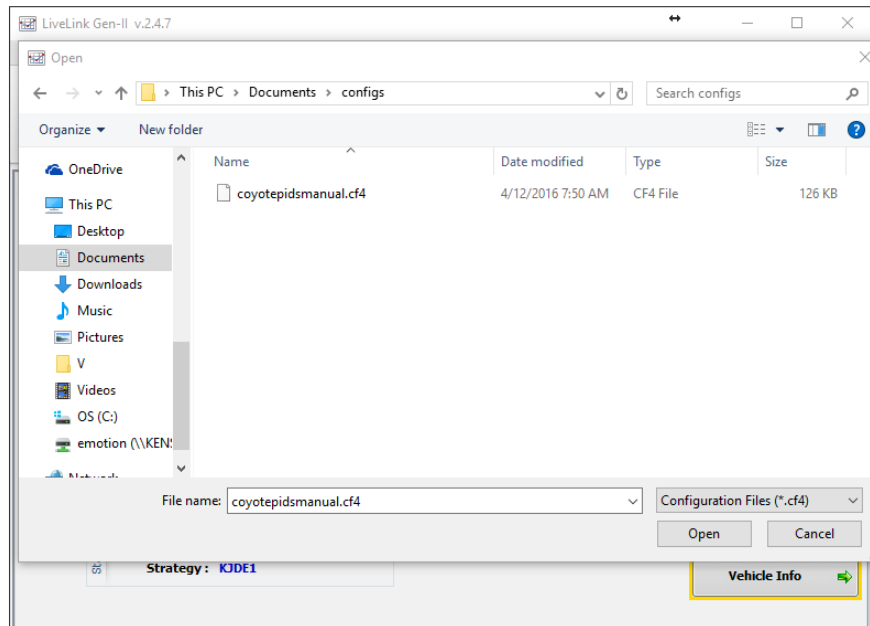


7) Once it recognizes the vehicle as show below the "Check Communication" button, select "Load Config"

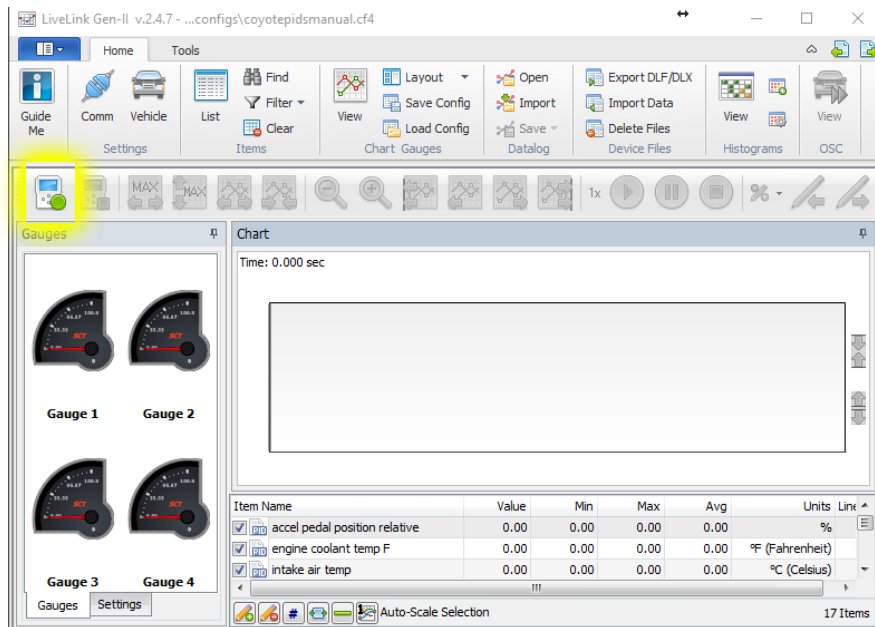


HOW TO DATALOG WITH SCT X4

8) Select the Config file you sent. Attached below are some common configuration files. If you need a configuration file for your vehicle, please email support@pbdyno.com

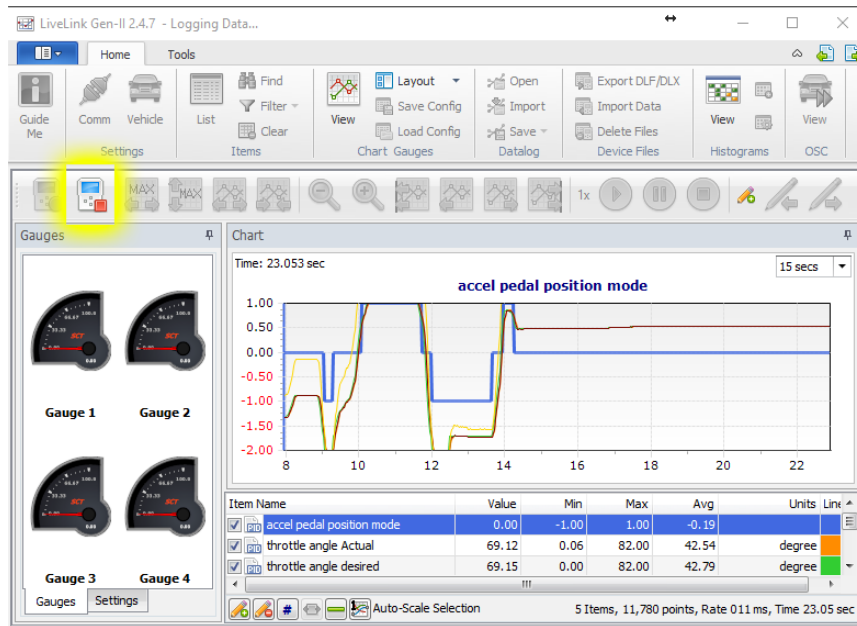


9) Once the Config file loads, click on the green button to start logging

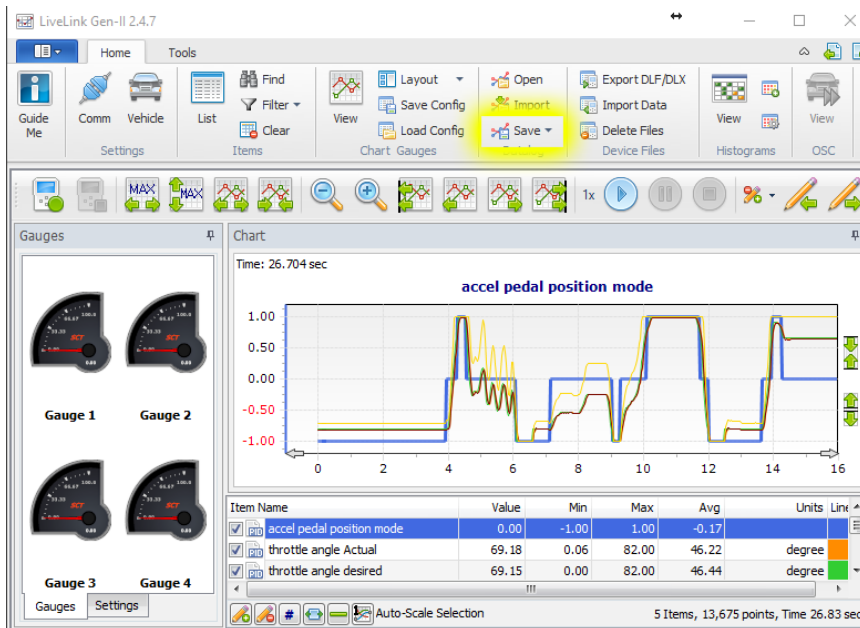


HOW TO DATALOG WITH SCT X4

10) When you are ready to stop logging, click the Red button to stop.

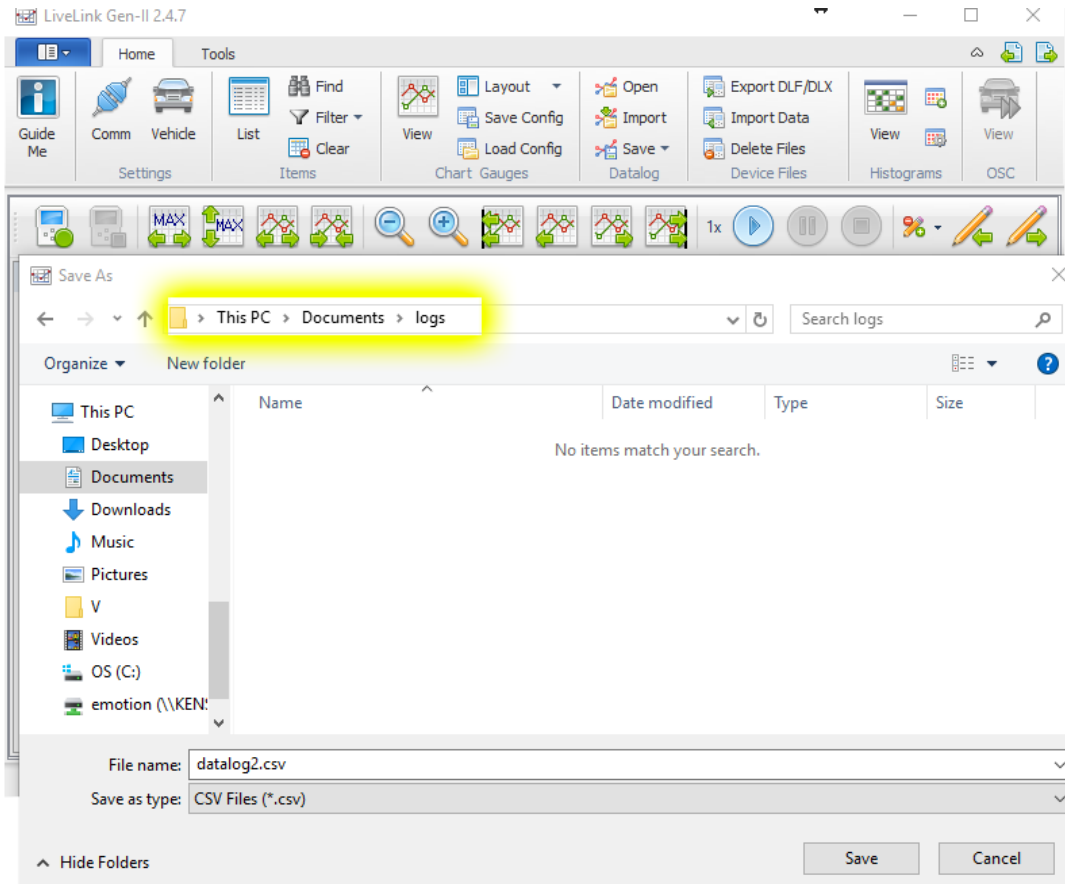


11) To Save your datalog, Click "Save" under the Datalog section. Be sure to select "Save All" and NOT "Save View"



HOW TO DATALOG WITH SCT X4

12) Be sure to remember where you save the file so it's easy to find later.



Common Datalogs we will ask for:

Idle Log

Unless directed otherwise, get the car warmed up first, start the logger, log for 3 minutes and save the log.

Drive Log

Unless directed otherwise, get the car warmed up first. Take the car for a 5-minute drive. Try to vary throttle position and speed to simulate normal driving. Do not go Wide Open Throttle unless directed to.

WOT Log

Unless directed otherwise, get the car warmed up first. First, find a place in your area you feel safe and comfortable going wide open throttle in your car. Also, select which gear you plan on using. For safety reasons, we suggest the lowest gear you can get good traction in. If you are spinning a lot, the log is not useful, so it's very important to have decent traction.

Dyno Log

Unless directed otherwise, get the car warmed up first. Let the car run for at least one minute before doing the pull. We will direct you on what RPM specifically to pull the car to on the dyno when we ask for the log. Do NOT go to redline unless directed.