



HP TUNER RDT INSTALLATION MANUAL 2007 AND UP TOYOTA VEHICLES

INTRODUCTION

Before beginning installation, we encourage you to read this manual thoroughly before you begin any portion of the installation:

1. Making any changes to the calibration is strictly prohibited. Any change will void all warranties and will make the vehicle non-emissions legal.
2. Ensure your battery voltage is at least 12v, if lower, install battery charger to maintain 12v.
3. **Whipple calibrations are for stock engines, changes such as long tubes, cold air intakes, cams and big throttle bodies are not supported. Changes such as these will require calibration changes which Whipple does not support.**
4. Having the latest OEM PCM and TCM calibration is highly recommended to eliminate potential OEM issues in calibration.
5. IT IS THE RESPONSIBILITY OF THE INSTALLER AND/OR USER OF THIS PRODUCT TO ENSURE THAT IT IS USED IN COMPLIANCE WITH ALL APPLICABLE LAWS AND REGULATIONS.

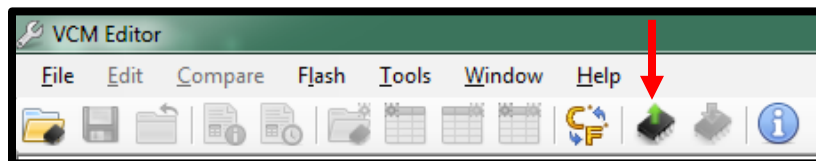
Go to the Whipple website **CAL REQUEST** to find the **RDT** software link or go to:

<https://files.hptuners.com/rtd%20flasher/rtd%20flasher.msi>. If you run into any issues installing the HP Tuner RDT software, email **support@hptuners.com** for resolution.

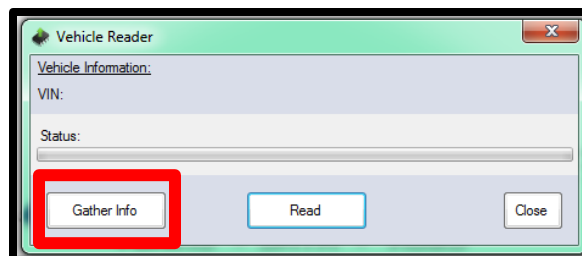
1. Connect to vehicle, turn key to engine run (do not start engine), push button type ignitions, hold push button down for 10 seconds to activate diagnostic mode. Open RTD Flasher.



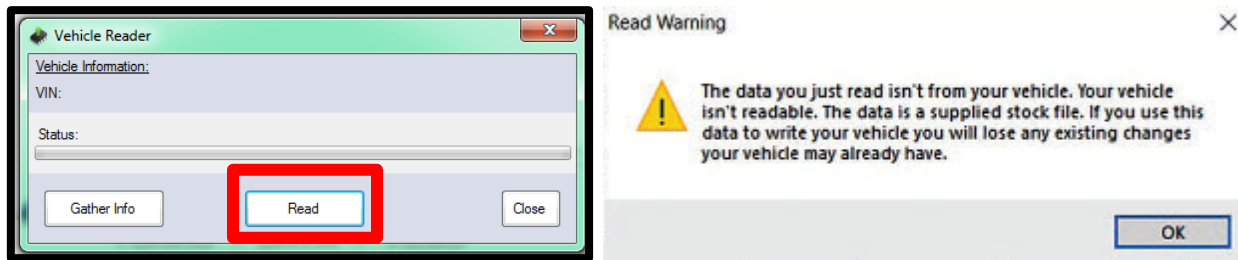
2. With the vehicle on, engine not running, click the **green arrow** icon to **READ** the file in the PCM.



3. Click the "Gather Info" icon to populate the PCM data (internet required).



- Once the info is self-gathered by HP Tuners, click the "Read" icon. In some cases, the file will not be able to be read, HP Tuners will give you a warning that states it is giving you the stock file, click ok.



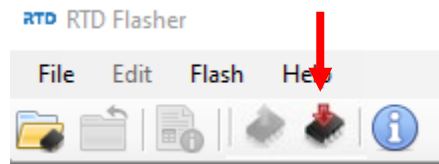
- Once the file is uploaded, save this file in an easy to find location (example: mydocuments/HP Tuners/cals and logs). Create a file name with VIN number, Customer name and engine size. Example: **2C3CDXCT1FH737913_John Smith_5.7L_Stock**. If you want to keep the file name shorter, use only the last 4 digits of the VIN but keep the same information. We will supply a similar name but with SC in the file to help distinguish between them. NOTE: Always keep the stock file. If you are a dealer/installer, email the file to the customer or install on the HP Tuner thumb drive supplied. Whipple does not store stock files.
- Go to the Whipple website and go to calibration request tab, or follow the link: [Whipple Superchargers Calibration Request](#). Calibrations may take 1-2 business days to build your unique calibration so this is important to do **BEFORE** you start the supercharger installation. Each calibration is locked to the supplied HP Tuner RDT serial #. **NOTE: Whipple builds the files and locks them to the supplied HP Tuner RDT tool. If you are using a different tool, you must notify Whipple, if not, your calibration will not open in your software.**

The image shows a web form for requesting a calibration. It contains various input fields: First Name, Last Name, Business Name (if applicable), Contact Phone Number, Email Address, Vehicle Make, Model Year, Vehicle Model, Engine Size (Liters), Transmission Type, Octane Being Used, VIN (Vehicle Identification Number), Supercharger Serial Number, Supercharger System Stage, Mileage of Vehicle, Upload Stock File (HP Tuner, Diablo) (GM SCT/BDX) with an 'Upload file' button, Flash tool Serial Number (located on back of device), PCM Strategy ID (SCT/BDX for Ford/Dodge Only), and a text area for 'List all other modifications (LT, CAI, etc):'.

- Once calibration is supplied, save to your PC in the same location as the stock file. Open RDT Flasher. Go to the help tab, with internet access and the RDT connected to PC, click **RESYNC INTERFACE** which will add credits to the tool.



- Once calibration is supplied, save to your PC in the same location as the stock file. Open RTD Flasher. Open the calibration by clicking file, connect to vehicle, turn key to engine run (do not start engine), push button type ignitions, hold push button down for 10 seconds to activate diagnostic mode. Click the red arrow icon (WRITE VEHICLE) to write the new calibration to the vehicle.



- Once the vehicle is flashed, turn key off per the on-screen instructions. The vehicle is now ready to start and operate.
- HP Tuners supplies a free data logging program, VCM Scanner. If required, you may use this for diagnostic purposes. Whipple has pre-made channel list for proper data logging. If logging, please request a data log channel list so you can gather the proper data.
- If tire/axle needs to be changed, using RDT Flasher, go to Edit, then Tire/Axle Wizard. Make the changes required and follow the on-screen menu to update the PCM or BCM.
- NEVER MAKE CHANGES TO THE CALIBRATION.** The calibration is designed and tested by Whipple Superchargers. Any change will void any and all warranties, along with emissions compatibility.
- All HP Tuner RDT files are locked and do not allow customer adjustment due to emission regulations.
- If your vehicle is not stock, Whipple will not make custom calibrations. Example, long tubes, high flow cats, different air intakes, etc.

For questions in regards to the software and installation, please visit HP Tuners FAQ section of their online forum as almost all answers are here: <https://www.hptuners.com/forum/forumdisplay.php?35-VCM-Suite-FAQ>